



VANCOUVER, CANADA

2019/20

INTERNATIONAL STUDENT GUIDE

WELCOME

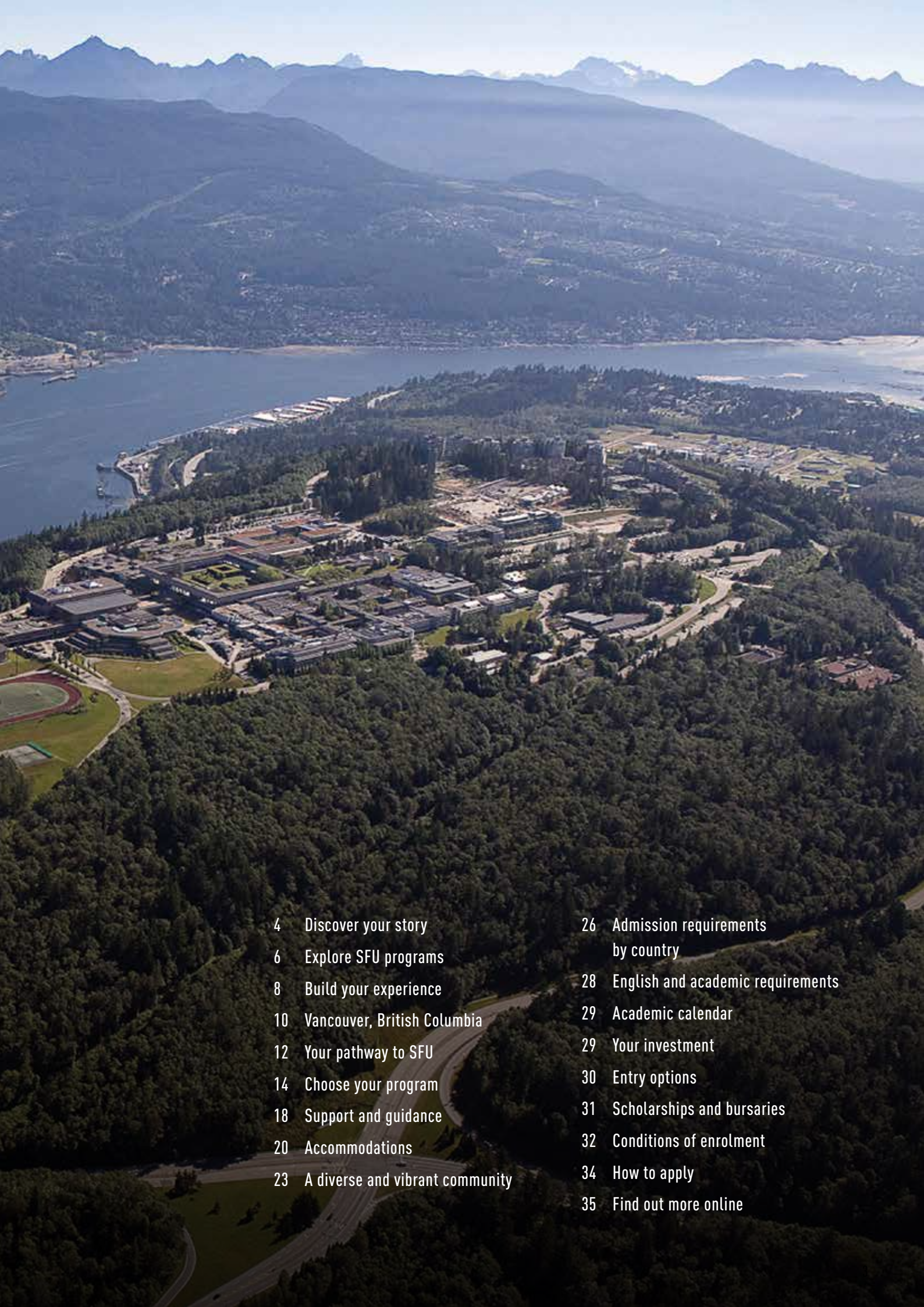


**PROFESSOR
ANDREW PETTER**

PRESIDENT AND
VICE-CHANCELLOR
SIMON FRASER UNIVERSITY

I am delighted to welcome Fraser International College students to SFU, and to one of the most beautiful and vibrant cities in the world.

SFU opened its doors in 1965 and has since developed into one of Canada's leading universities, with an international reputation for innovative teaching, cutting-edge research and community engagement. This reputation is built on our strengths in the liberal arts and sciences, as well as our interdisciplinary and professional programs, and draws on our commitment to integrating teaching and research.



4	Discover your story	26	Admission requirements by country
6	Explore SFU programs	28	English and academic requirements
8	Build your experience	29	Academic calendar
10	Vancouver, British Columbia	29	Your investment
12	Your pathway to SFU	30	Entry options
14	Choose your program	31	Scholarships and bursaries
18	Support and guidance	32	Conditions of enrolment
20	Accommodations	34	How to apply
23	A diverse and vibrant community	35	Find out more online

DISCOVER YOUR STORY

1st

Ashoka U Changemaker
designated campus in
British Columbia

2nd

In Canada for faculty
research impact

QS World University Rankings, 2018

Top 55

Among the world's
technology challengers

Times Higher Education, 2018

Top 1%

Worldwide Rankings

QS World University Rankings, 2018

Top 100

SFU hosts Cedar - one of the top
100 most powerful academic
supercomputers in the world

\$139M

Research funding quadrupled
over the last 15 years



#1

Comprehensive
university in Canada

Maclean's, 2019

1st

Canadian research university to be
granted accreditation by the
Northwest Commission on Colleges
and Universities (NWCCU)



8

faculties

150+

distinct programs

35,000+

students

130,000+

alumni

At SFU you'll explore, discover and investigate until you find your path, your SFU story. Your SFU will be entirely yours.

It will be different than you expect — maybe a little tougher — but, we're willing to bet, so much better. And our team will be there to guide and support you every step of the way.

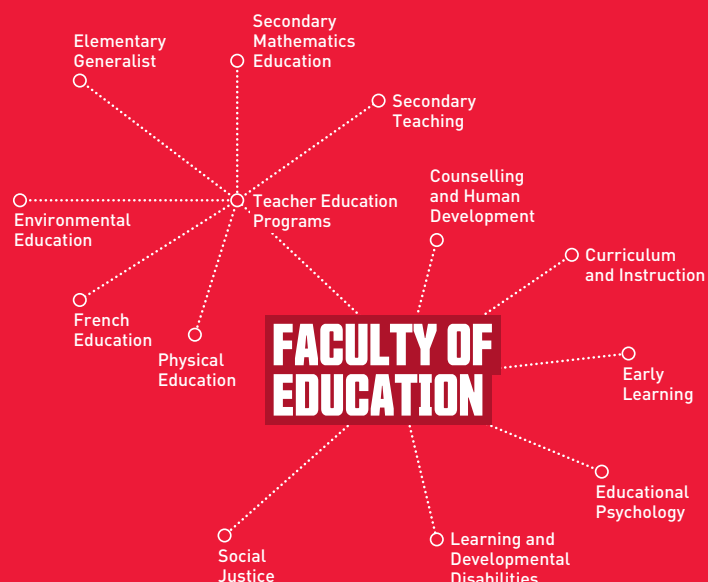
With innovative programs, a focus on academic excellence and a vibrant campus community, it's no wonder SFU is consistently ranked one of Canada's top universities. At SFU, you'll be taught by world-renowned educators and will study alongside other talented students who share your passion for learning.

SFU PROGRAM OPTIONS

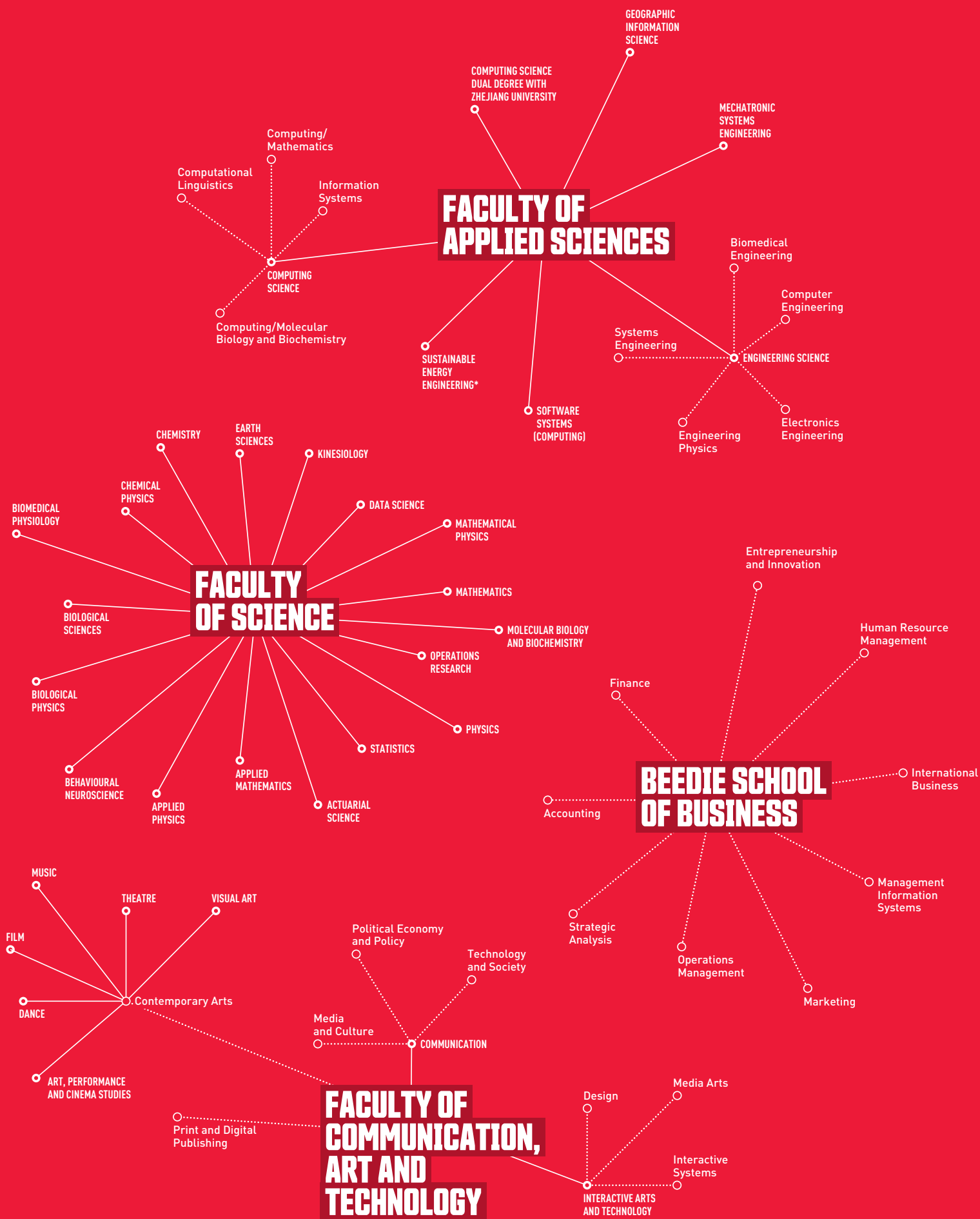
When you apply to SFU, you will choose a faculty and a program. But that's just where you start. Once you're here, you'll have the freedom to explore different courses, programs and disciplines. Where and when you'll discover your SFU remains to be seen (and that, we think, is part of the fun).

CHART LEGEND

- Faculties
- Program majors
-○ Minors, concentrations, special topics, or areas of interest*



*Coming Fall 2019



*Coming Fall 2019

BUILD YOUR

40 YEARS

Providing co-op work terms
across all faculties

C\$5,016

Average income from
12-week placement

EXPERIENCE



SFU has one of the largest Co-op programs in North America.

Co-op is where you undertake paid work placements during your degree program. SFU offers Co-op in all academic disciplines across 54 undergraduate and 10 graduate programs, with approximately 2,500 Co-op work terms each year. FIC students are eligible to apply for the Co-op program after they transfer to SFU.

9,500

students in co-op education

2,300

organizations
recruiting co-op students
locally and globally



Learn new skills and explore career options, network with other professionals in the field and gain valuable career-related work experience.

COMPANIES THAT FIC AND SFU STUDENTS HAVE BEEN PLACED WITH INCLUDE:

FLUOR

ERNST & YOUNG

Coca-Cola

KPMG

SAP

facebook

HSBC

BMO

IBM

Microsoft

SONY



DARIYA CHZHAN, RUSSIA

UTP STAGE II:
MANAGEMENT INFORMATION
SYSTEMS

I am a third-year Beedie School of Business student at Simon Fraser University concentrating in Management Information Systems. Before transferring to SFU, I completed UTP Stage II at Fraser International College. Attending FIC was a good decision as it allowed me to flourish as a professional and explore incredible opportunities. The modest classroom sizes allowed me to receive better attention from qualified instructors and helped me to prepare for life at SFU. Once I transferred to SFU, I applied for an international co-op position and I'm currently employed at a multinational company for my first internship. FIC is a fantastic pathway program to develop your knowledge and ensure a bright future in one of the best universities in North America.

NOTABLE SFU ALUMNI

- Francesco Aquilini, owner of the Vancouver Canucks and Rogers Arena
- Mahamudu Bawumia, Vice President of Ghana; former deputy governor, Bank of Ghana
- Gordon Campbell, former Premier of British Columbia
- Grace Chan, Miss Hong Kong 2013, Miss Chinese International 2014
- Calvin Chen, Taiwanese actor, singer, host
- Dino Patti Djalal, Indonesian Ambassador for the United States
- Lyn Hancock, photojournalist and author
- Zabeen Hirji, Chief Human Resources Officer for the Royal Bank of Canada
- Hafeez Hoorani, Pakistani physicist
- Sam Sullivan, former mayor of Vancouver
- Margaret Trudeau, Canadian author and social advocate

VANCOUVER

#3 MOST LIVABLE CITY IN THE WORLD*

An aerial photograph of Vancouver, Canada, showing the city's harbor and skyline. The image captures the city's waterfront, with numerous boats and yachts docked at piers. In the background, the city's skyline is visible, featuring a mix of modern high-rise buildings and older structures. The city is nestled at the foot of a large mountain range, which is visible in the distance under a clear blue sky. The water in the harbor is calm, reflecting the city and the sky. A large bridge with two prominent white towers spans the harbor, connecting different parts of the city. The overall scene depicts a vibrant and scenic urban environment.

Located on Canada's Pacific Coast, Vancouver is a safe and vibrant city, and benefits from mild winters and warm dry summers. With its strong economy and a thriving downtown area, Vancouver offers excellent shopping, nightlife and outdoor recreation activities.

2+ MILLION

Vancouver population

THINGS TO DO



North Shore Mountains

Grouse, Seymour and Cypress mountains offer excellent skiing, snowboarding and hiking and are all within a short drive of Vancouver.



Granville Island

A vibrant market featuring artisan studios, theatre, restaurants and local produce.



Gastown

The historic heart of downtown Vancouver, with cobbled streets, an original steam clock, great nightlife, restaurants and galleries.



Stanley Park

This evergreen oasis has 400 hectares (1,000 acres) of majestic cedar, fir and hemlock trees. Be sure to visit the Vancouver Aquarium, take in an art event or go for a stroll or cycle along the seawall.



YOUR PATHWAY TO SFU



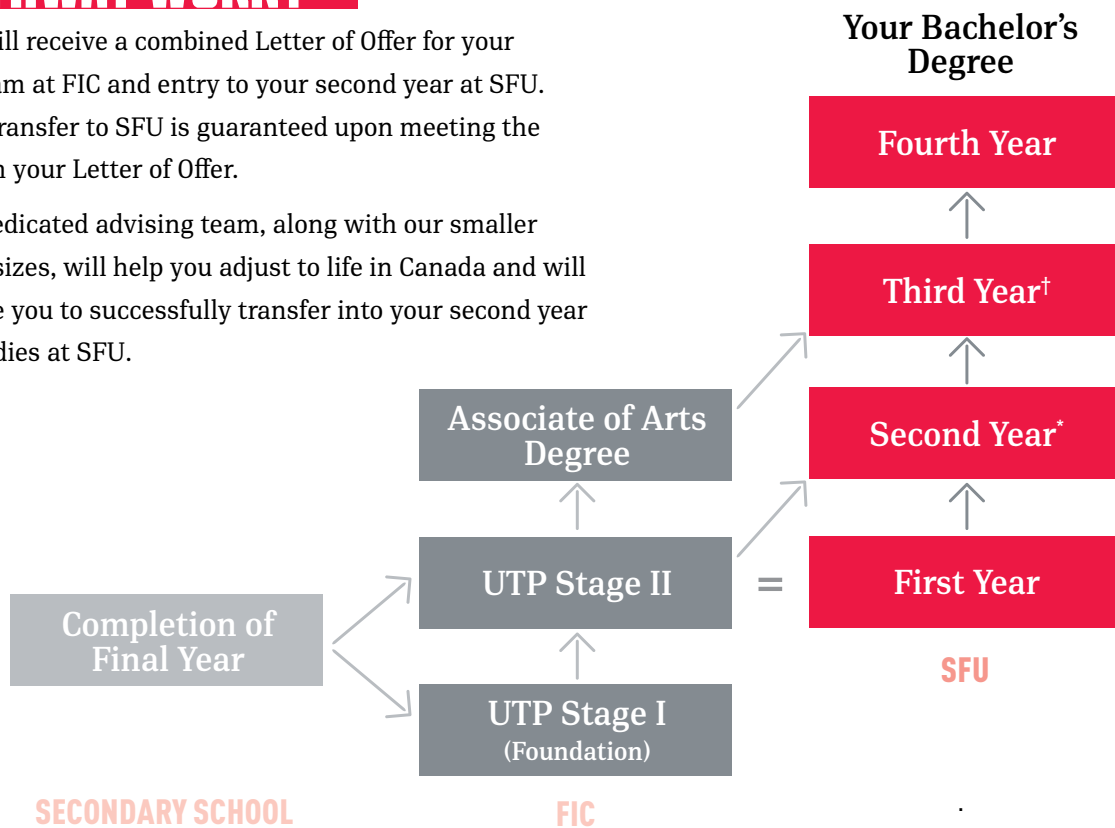
Fraser International College (FIC) in partnership with Simon Fraser University (SFU), offers international students a unique pathway to one of Canada's leading universities. At FIC, you will benefit from:

- university designed programs taught by qualified university instructors
- smaller classes with more instructor contact time
- access to university facilities and services including libraries, computer labs, recreation facilities, on-campus accommodation, and health services
- academic and personal support to help you reach your goals
- guaranteed transfer upon meeting the academic requirements in your FIC Letter of Offer
- receiving a combined Letter of Offer for your program at FIC and entry to your second year at SFU

HOW DOES THE FIC PATHWAY WORK?

You will receive a combined Letter of Offer for your program at FIC and entry to your second year at SFU. Your transfer to SFU is guaranteed upon meeting the GPA in your Letter of Offer.

Our dedicated advising team, along with our smaller class sizes, will help you adjust to life in Canada and will enable you to successfully transfer into your second year of studies at SFU.



* Entry into second year at SFU is dependent upon successful completion of UTP Stage II with the specified GPA for your program of study at SFU. † Entry into third year at SFU is dependent on your successful completion of the FIC Associate of Arts degree with the GPA as specified by SFU.



ENWONGOABASI IME EKANEM, NIGERIA

UTP STAGE II: ENGINEERING

I chose to study in Canada because of the highly rated education system and the multicultural environment, which I've heard about a lot. I felt like I needed a smooth passage into SFU, so I found FIC which provided a pathway that allowed me to get used to the Canadian education system and to how things are at SFU. In the beginning I was nervous that I wouldn't be able to adapt to SFU and to Vancouver, but FIC's program made it a lot easier for me to get a hold of the academic and social sides of my life here in Canada. Through FIC, I've also had the opportunity to meet students from other countries and I believe that has made my experience richer as I have been able to take classes and work on projects with other international students.



CHOOSE YOUR PROGRAM

FOUNDATION

UNIVERSITY TRANSFER PROGRAM STAGE I (UTP STAGE I)

UTP Stage I is a pre-university program designed for students who need to take additional courses before starting UTP Stage II.

During UTP Stage I at FIC, you will study eight academic courses over two terms (four courses per four-month term). After successfully completing the program, you will progress to UTP Stage II.

Courses*

Eight courses from the following options:

- BUS108 Business Management
- COM001 Introduction to Computing Concepts & Algorithms
- COM002 Introduction to Computers & Their Applications
- ECN100 Introduction to Economics
- ESR100 English Skills / Reading
- IUW100 Introduction to University Writing
- MTH099 Beginning with Algebra
- MTH101 Introduction to Mathematics
- MTH103 Foundations of Mathematics
- PHL120 An Introduction to Philosophical Reasoning
- UNI101 University Life
- WIS100 World Issues

Entry to UTP Stage II

* A student advisor can help you choose appropriate courses to satisfy entry requirements to UTP Stage II. Students must successfully complete two UTP Stage I Math courses at the stipulated grades to progress to Engineering Science.

UNDERGRADUATE

UNIVERSITY TRANSFER PROGRAM STAGE II (UTP STAGE II)

UTP Stage II is offered in association with SFU as a pathway to a degree at SFU. FIC offers UTP Stage II in:

- Arts & Social Sciences
- Business Administration
- Communication & Business
- Communication, Art & Technology
- Computing Science
- Engineering Science
- Environment
- Health Sciences

The courses taken during this program are designed by SFU and all instructors are approved by the university. Depending on your secondary school qualifications and grades, you may apply directly to UTP Stage II.

To progress to the second year of the relevant degree program at SFU, you must complete 10 academic courses

and achieve the minimum cumulative grade-point average (GPA) specified for your program of study at SFU. You can complete UTP Stage II in three terms (one year).

FIC ASSOCIATE OF ARTS DEGREE

The FIC Associate of Arts degree is a flexible two-year program that covers a broad range of subjects. Upon completion of the program, and achieving the required GPA, you may apply to transfer to the third year of a relevant degree program at SFU.

UTP STAGE II: ARTS AND SOCIAL SCIENCES

Courses

Select at least one course from:

- ENGL112 Literature Now
- ENGL113 Literature and Performance
- ENGL115 Literature and Culture
- PSYC109 Brain, Mind and Society
- WL101 Writing in World Literature

Select at least five courses from the following Arts and Social Sciences and Breadth course lists:

Arts and Social Sciences Courses

- CRIM101 Introduction to Criminology
- CRIM135 Introduction to Canadian Law and Legal Institutions: A Criminal Justice Perspective
- ECON103 Principles of Microeconomics
- ECON105 Principles of Macroeconomics
- ECON260 Environmental Economics
- ENGL112 Literature Now
- ENGL113 Literature and Performance
- ENGL115 Literature and Culture
- FNST101 Introduction to First Nations Studies
- FNST201 Canadian Aboriginal Peoples' Perspectives on History
- FREN120 French for Beginners
- HIST102 Canada Since Confederation
- HIST204 The Social History of Canada
- LBST101 Introducing Labour Studies
- LING111 Introduction to English Vocabulary Analysis
- LING200 Introduction to Sentence Analysis
- LING220 Introduction to Linguistics
- PHIL105 Critical Thinking
- POL100 Introduction to Politics and Government
- POL141 War, International Cooperation and Development
- POL231 Comparative Politics
- PSYC100 Introduction to Psychology I
- PSYC102 Introduction to Psychology II
- PSYC109 Brain, Mind and Society
- PSYC250 Introduction to Developmental Psychology
- WL101 Writing in World Literature
- WL201 East/West Encounters

UTP STAGE II: ARTS AND SOCIAL SCIENCES (CONT'D)

Breadth Courses

- ARCH100 Ancient Peoples and Places
- CA135 Introduction to Cinema
- CMNS110 Introduction to Communication Studies
- BUS200 Business Fundamentals
- BUS216 Introduction to Business Writing
- GEOG100 Our World: Introducing Human Geography
- HSCI160 Global Perspectives on Health
- IAT110 Visual Communication Design
- MATH100 Pre-calculus
- MATH157 Calculus for the Social Sciences I
- STAT203 Introduction to Statistics for the Social Sciences

Elective courses

Students select at least four additional courses within the FIC roster of offerings.

Entry to second year at SFU: Bachelor of Arts

Courses and programs are subject to change. For the most up-to-date course information, please visit fraseric.ca. In order to transfer to the SFU programs listed above, you must complete UTP Stage II with a cumulative Grade Point Average (cGPA) of 2.5, with a grade of C- or better in all required academic courses and a minimum of ten academic courses at FIC. Course offerings and required courses may change without notice. A student advisor can help you choose appropriate courses to satisfy SFU entry requirements. UTP Stage II may include a mandatory non-credit academic literacy course.

UTP STAGE II: BUSINESS ADMINISTRATION

Required courses

- BUS200 Business Fundamentals
- BUS216 Business Writing Essentials
- BUS251 Financial Accounting I
- ECON103 Principles of Microeconomics
- ECON105 Principles of Macroeconomics
- ENGL112 Literature Now
- or
- ENGL113 Literature & Performance
- or
- ENGL115 Literature & Culture
- MATH157 Calculus for the Social Sciences I
- PHIL105 Critical Thinking

Elective courses

Two courses selected from FIC's approved Business elective course offerings. The two electives will allow students to complete various breadth requirements.

Entry to second year at SFU: Bachelor of Business Administration

In order to transfer to the Bachelor of Business Administration, you must complete UTP Stage II with a cumulative Grade Point Average (cGPA) of 3.2, a grade of C- or better in all required academic courses and a minimum of ten academic courses at FIC. Students with a 2.8 cGPA will be able to make a broad-based application for the Bachelor of Business Administration. Students with a 2.5 cGPA will be guaranteed admission to a business minor program. Course offerings and required courses may change without notice. UTP Stage II may include a mandatory non-credit academic literacy course. A student advisor can help you choose appropriate courses for the business minor program.

UTP STAGE II: COMMUNICATION, ART AND TECHNOLOGY

Required courses

- CA135 Introduction to Cinema
- CA149 Sound
- CMNS110 Introduction to Communication Studies
- CMNS130 Communication and Social Change
- IAT102 Graphic Design
- IAT110 Visual Communication Design

Choose two of

- ENGL112 Literature Now
- ENGL113 Literature and Performance
- ENGL115 Literature & Culture
- WL101 Writing in World Literature

Students select at least two additional electives within the FIC roster of offerings.

Entry to second year at SFU: Students will enter the Faculty of Communication, Art and Technology in a Bachelor of Arts with a Double Minor.

In order to transfer to the Faculty of Communication, Art and Technology (FCAT), you must complete UTP Stage II with a cumulative Grade Point Average (cGPA) of 2.5, a grade of C- or better in all required academic courses and a minimum of ten academic courses at FIC. Admission to Contemporary Arts Minors may also require a portfolio, audition or interview. UTP Stage II may include a mandatory non-credit academic literacy course. Course offerings and required courses may change without notice. A student advisor can help you choose appropriate courses to satisfy SFU entry requirements.

UTP STAGE II: COMMUNICATION AND BUSINESS

Required courses

- CMNS110 Introduction to Communication Studies
- CMNS130 Communication and Social Change
- CA135 Introduction to Cinema
- IAT102 Graphic Design
- IAT110 Visual Communication Design
- ECON103 Principles of Microeconomics
- BUS200 Canadian Business Fundamentals
- BUS216 Business Writing Essentials
- BUS251 Financial Accounting I

Choose one of

- ENGL112 Literature Now
- ENGL113 Literature & Performance
- ENGL115 Literature & Culture

Entry to second year at SFU: Students will enter the Faculty of Communication, Art and Technology in a Bachelor of Arts with a Double Minor.

In order to transfer to the Faculty of Communication, Art and Technology (FCAT), you must complete UTP Stage II with a cumulative Grade Point Average (cGPA) of 2.5, a grade of C- or better in all required academic courses and a minimum of ten academic courses at FIC. UTP Stage II may include a mandatory non-credit academic literacy course. Course offerings and required courses may change without notice.

UTP STAGE II: COMPUTING SCIENCE

Required courses

- CMPT130 Introduction to Computer Programming I
- CMPT135 Introduction to Computer Programming II
- MACM101 Discrete Mathematics I
- MATH151 Calculus I
- MATH152 Calculus II

Choose one of

- ENGL112 Literature Now
- ENGL113 Literature and Performance
- ENGL115 Literature & Culture
- PSYC109 Brain, Mind & Society
- WL101 Writing in World Literature

Elective courses

Four elective courses selected from FIC's broad offerings. The four electives will allow students to complete various breadth requirements.

Entry to second year at SFU: Bachelor of Science (Computing Science)

In order to transfer to the SFU programs listed above, you must complete UTP Stage II with a cumulative Grade Point Average (cGPA) of 2.75 and a program GPA of 2.75, a grade of C- or better in all required academic courses and a minimum of ten academic courses at FIC. Course offerings and required courses may change without notice. A student advisor can help you choose appropriate courses to satisfy SFU entry requirements. UTP Stage II may include a mandatory non-credit academic literacy course.

UTP STAGE II: ENGINEERING SCIENCE

Required courses

- CMPT130 Introduction to Computer Programming I
- CMPT135 Introduction to Computer Programming II
- ENSC100 Applied Science, Technology and Society
- ENSC105 Process, Form, and Convention in Professional Genres
- ENSC180 Introduction to Engineering Analysis
- MATH151 Calculus I
- MATH152 Calculus II
- MATH232 Applied Linear Algebra
- PHYS140 Studio Physics – Mechanics and Modern Physics
- PHYS141 Studio Physics – Optics, Electricity and Magnetism

Entry to second year at SFU: Bachelor of Applied Science

In order to transfer to the SFU programs listed above, you must complete UTP Stage II with a cumulative Grade Point Average (cGPA) of 2.75 and a program GPA of 2.75, a grade of C- or better in all required academic courses and a minimum of ten academic courses at FIC. Course offerings and required courses may change without notice. Students must obtain a score of 26 or above in the FIC Math Assessment Placement test to enrol in the Engineering Science program. FIC reserves the right to place students with a Math Assessment Placement score below 26 in an alternative program.

UTP STAGE II: ENVIRONMENT

Bachelor of Arts/Bachelor of Environment

Required courses

- ARCH100 Ancient People and Places
- GEOG100 Our World: Introducing Human Geography

Choose one of

- ENGL112 Literature Now
- ENGL113 Literature and Performance
- ENGL115 Literature & Culture
- PSYC109 Brain, Mind & Society
- WL101 Writing in World Literature

Seven courses, including one "Q" course, from the list of approved Environment elective courses at FIC.

UTP STAGE II: ENVIRONMENT (CONT'D)

Bachelor of Science

Required courses

- ARCH100 Ancient People and Places
- CMPT120 Introduction to Computing Science & Programming I
- GEOG100 Our World: Introducing Human Geography
- MACM101 Discrete Mathematics
- MATH151 Calculus I
- MATH152 Calculus II

Choose one of

- ENGL112 Literature Now
- ENGL113 Literature and Performance
- ENGL115 Literature & Culture
- PSYC109 Brain, Mind & Society
- WL101 Writing in World Literature

Three courses from the list of approved Environment elective courses at FIC.

Entry to second year at SFU: Bachelor of Arts or Bachelor of Science or Bachelor of Environment

In order to transfer to the SFU programs listed above, you must complete UTP Stage II with a cumulative Grade Point Average (cGPA) of 2.5, a grade of C- or better in all required academic courses, and a minimum of ten academic courses at FIC. Course offerings and required courses may change without notice. A student advisor can help you choose appropriate courses to satisfy SFU entry requirements. UTP Stage II may include a mandatory non-credit academic literacy course.

UTP STAGE II: HEALTH SCIENCES

Bachelor of Arts

Required courses

- BISC100 Introduction to Biology
- BPK140 Contemporary Health Issues
- HSC160 Global Perspectives on Health
- MATH100 Pre-Calculus
- PSYC109 Brain, Mind & Society
- STAT203 Introduction to Statistics for the Social Sciences

Elective courses

Choose five courses from the following list with no more than two from any one group.

Group One:

- ENGL112 Literature Now
- ENGL113 Literature & Performance
- ENGL115 Literature & Culture
- FNST101 Introduction to First Nations Studies
- HIST102 Canada Since Confederation
- HIST204 The Social History of Canada
- WL101 Writing in World Literature
- WL201 East/West Encounters

Group Two:

- CMNS110 Introduction to Communication Studies
- CRIM101 Introduction to Criminology
- CRIM135 Introduction to Canadian Law and Legal Institutions
- FNST201 Canadian Aboriginal Peoples' Perspectives on History
- LBST101 Introducing Labour Studies
- LING111 Introduction to English Vocabulary Analysis
- LING200 Introduction to Sentence Analysis
- LING220 Introduction to Linguistics
- POL100 Introduction to Politics and Government

UTP STAGE II: HEALTH SCIENCES (CONT'D)

- POL141 War, International Cooperation and Development
- POL231 Comparative Politics
- PSYC100 Introduction to Psychology I
- PSYC102 Introduction to Psychology II

Entry to second year at SFU: Bachelor of Arts, Health Sciences

In order to transfer to the SFU programs listed above, you must complete UTP Stage II with a cumulative Grade Point Average (cGPA) of 2.5, a grade of C- or better in all required academic courses and a minimum of ten academic courses at FIC. Course offerings and required courses may change without notice. A student advisor can help you choose appropriate courses to satisfy SFU entry requirements. UTP Stage II may include a mandatory non-credit academic literacy course.

UTP STAGE II: HEALTH SCIENCES

Bachelor of Science

Required courses for admission to Population & Quantitative Health Sciences

- BISC100 Introduction to Biology
- HSC160 Global Perspectives on Health
- MATH151 Calculus I
- STAT203 Introduction to Statistics for the Social Sciences

Choose two of

- CMPT120 Introduction to Computer Science & Programming I
- CMPT130 Introduction to Computer Science & Programming II
- MATH152 Calculus II
- PHYS140 Studio Physics – Mechanics & Modern Physics

Required Courses for admission to Life Sciences

- BISC100 Introduction to Biology
- HSC160 Global Perspectives on Health
- MATH151 Calculus I
- MATH152 Calculus II
- PHYS140 Studio Physics – Mechanics & Modern Physics
- STAT203 Introduction to Statistics for the Social Sciences

Both Population & Quantitative Health Sciences and Life Sciences streams must choose one of:

- ENGL112 Literature Now
- ENGL113 Literature & Performance
- ENGL115 Literature & Culture
- PSYC109 Brain, Mind & Society
- WL101 Writing in World Literature

Elective Courses

Both Population & Quantitative Health Sciences and Life Sciences streams require the completion of 3 elective courses.

Choose two of

- CMNS110 Introduction to Communication Studies
- CRIM101 Introduction to Criminology
- CRIM135 Introduction to Canadian Law and Legal Institutions
- ECON103 Principles of Microeconomics
- ECON105 Principles of Macroeconomics
- FNST201 Canadian Aboriginal Peoples' Perspectives on History
- LBST101 Introducing Labour Studies
- LING111 Introduction to English Vocabulary Analysis
- LING200 Introduction to Sentence Analysis
- LING220 Introduction to Linguistics
- POL100 Introduction to Politics and Government
- POL141 War, International Cooperation and Development
- POL231 Comparative Politics
- PSYC100 Introduction to Psychology I
- PSYC102 Introduction to Psychology II

UTP STAGE II: HEALTH SCIENCES (CONT'D)

Choose one of

- ENGL112 Literature Now
- ENGL113 Literature & Performance
- ENGL115 Literature & Culture
- FNST101 Introduction to First Nations Studies
- HIST102 Canada Since Confederation
- HIST204 The Social History of Canada
- WL101 Writing in World Literature
- WL201 East/West Encounters

Entry to second year at SFU: Bachelor of Science, Health Sciences

In order to transfer to the SFU programs listed above, you must complete UTP Stage II with a cumulative Grade Point Average (cGPA) of 2.5, a grade of C- or better in all required academic courses and a minimum of ten academic courses at FIC. Course offerings and required courses may change without notice. A student advisor can help you choose appropriate courses to satisfy SFU entry requirements. UTP Stage II may include a mandatory non-credit academic literacy course.

FIC ASSOCIATE OF ARTS DEGREE*

The FIC Associate of Arts degree is a two-year program covering a broad range of subjects. It provides an educational experience that will prepare you for work and citizenship, as well as lay a solid foundation for further study. After obtaining the FIC Associate of Arts degree, you may apply to transfer to third year of a relevant degree program at SFU.

Program strengths

- access to SFU facilities and resources
- small class sizes
- additional hours of face-to-face teaching
- support tutorials and peer tutoring

Requirements: You must complete 60 credits as per the degree structure, specifically:

- six credits in first-year English
- nine credits in Science, which shall include at least:
 - three credits in Mathematics, Computing Science or Statistics
 - three credits in a laboratory science
- 36 credits in Arts, which shall include:
 - six credits in Social Sciences
 - six credits in Humanities (other than English)
 - 24 additional credits in Arts
- nine further credits in Arts, Science or other areas

Visit fraseric.ca for information about course options.

* This program is offered under the written consent of the Minister of Advanced Education, effective 28 May 2010, having undergone a quality assessment process and been found to meet the criteria established by the Ministry. Nevertheless, prospective students are responsible for satisfying themselves that the program and the degree will be appropriate to their needs (for example, acceptable to potential employers, professional licensing bodies or other educational institutions).

SUPPORT AND GUIDANCE

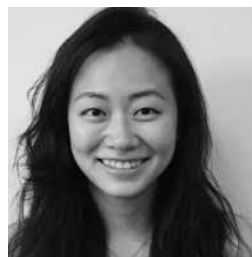




At Fraser International College, support is always close by, with qualified staff and student volunteers available to students, both online and in person.

No concern is too small! Our advising team helps students with everything from course planning and choosing a major, to making friends and self-care. FIC students also have access to services and programs that help them progress through their program in a timely fashion.

At FIC, we practice proactive advising by intentionally reaching out to students to create connections and community. Proactive advising enables us to ensure students know who we are and where to find us when they need support.



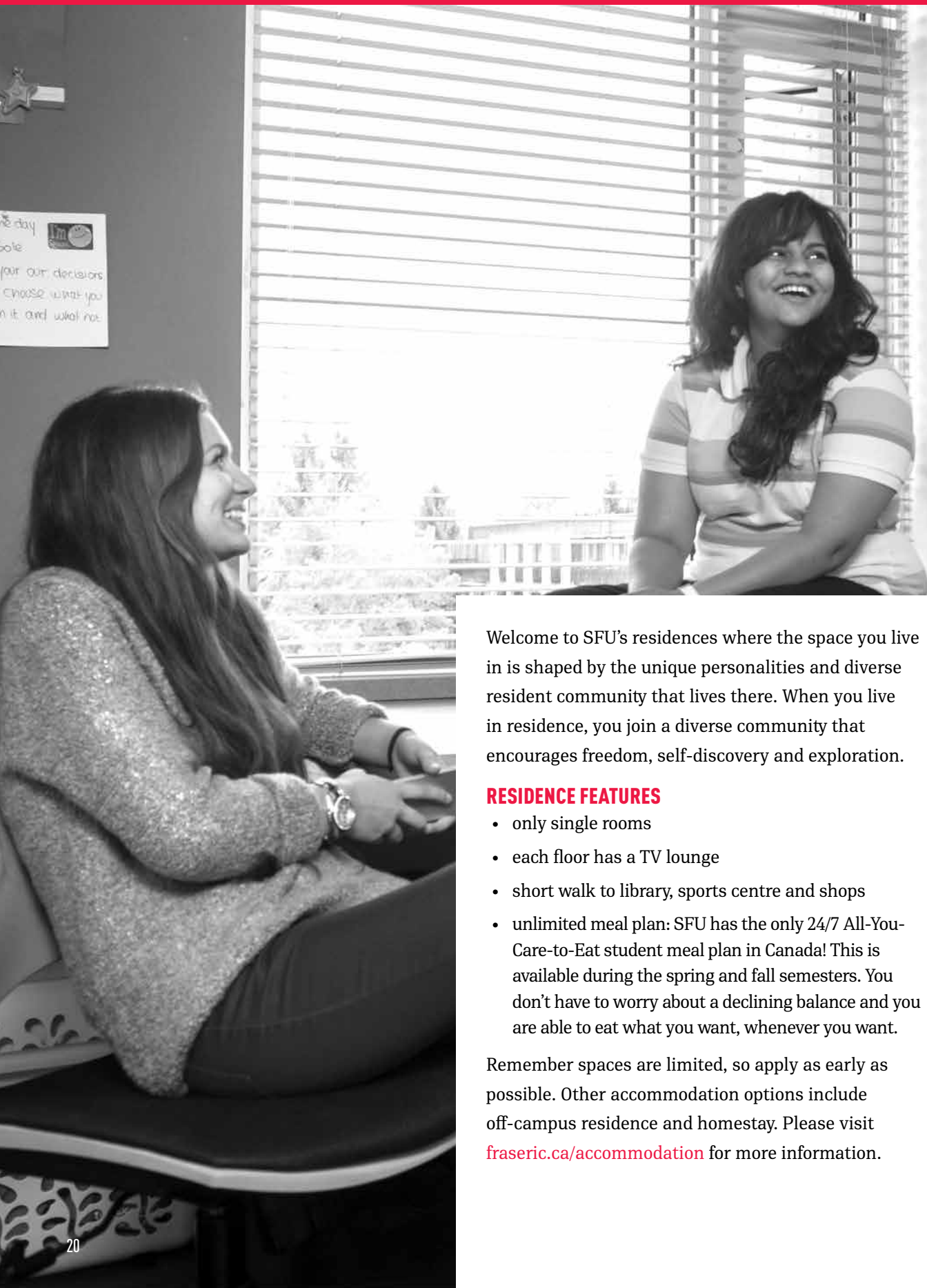
ANNE TSAI, TAIWAN

UTP STAGE II: BUSINESS

I chose FIC because it would allow me to transfer to SFU without spending more time transferring from other institutions.

My experience at FIC went beyond my expectations! I learned a lot about other cultures from meeting people from other countries and making friends from different cultures. I also got a chance to volunteer a lot while at FIC. I was part of the peer education and advising programs which allowed me to help my peers with their courses and I got a chance to work within a team environment while I was still at FIC.

ACCOMMODATIONS



Welcome to SFU's residences where the space you live in is shaped by the unique personalities and diverse resident community that lives there. When you live in residence, you join a diverse community that encourages freedom, self-discovery and exploration.

RESIDENCE FEATURES

- only single rooms
- each floor has a TV lounge
- short walk to library, sports centre and shops
- unlimited meal plan: SFU has the only 24/7 All-You-Care-to-Eat student meal plan in Canada! This is available during the spring and fall semesters. You don't have to worry about a declining balance and you are able to eat what you want, whenever you want.

Remember spaces are limited, so apply as early as possible. Other accommodation options include off-campus residence and homestay. Please visit fraseric.ca/accommodation for more information.



**FOR MORE INFORMATION:
[SFU.CA/STUDENTS/RESIDENCES](https://sfu.ca/students/residences)**





A DIVERSE AND VIBRANT COMMUNITY



At Fraser International College, we foster community building through our diverse student leadership programs. As you explore your interests and passions, we support and provide opportunities for you to develop skills that align with your academic goals.

You are encouraged to make the most of your experience by taking part in student-led clubs, participating in field trips in and around beautiful British Columbia, and volunteering with FIC programs such as Peer Education, IT Squad, Awareness Campaign Team and more.

Our programs are designed to empower you to connect with the university community, while at the same time promoting self-awareness and building career-readiness skills.







UNDERGRADUATE ADMISSION REQUIREMENTS BY COUNTRY

Country	UTP Stage I	UTP Stage II Business Administration; Arts and Social Sciences; Communication, Art and Technology; Environment (Arts); Health Sciences (BA); Associate of Arts Degree	UTP Stage II Computing Science	UTP Stage II Engineering Science; Environment (Science); Health Sciences (BSc)
GCSE, O-Level or A-Level	GCSE O Levels 4 A C Grades	A Levels: 2 X C Grades	A Levels: minimum B in Math + 1 C Grade science subject	A Levels: B in Math and 2 X C Grades in science subjects
Argentina	Bachiller with minimum 6.0 average in 4 academic subjects	Bachiller with minimum 7.0 average in 4 academic subjects	Bachiller with minimum 7.0 average in 4 academic subjects including Math minimum 8.0 + 1 science subject	Bachiller with minimum 8.0 average in 4 academic subjects including Math minimum 8.0 + 2 science subjects
Bahrain	Completion of 11 years of academic preparation with 75% average	Tawjihiya (General Secondary School Education Certificate) with average 75% in 4 academic subjects	Tawjihiya (General Secondary School Education Certificate) with average 75% including 85% minimum in Math + 1 science subject	Tawjihiya (General Secondary School Education Certificate) with 85% minimum in Math, Physics and Chemistry
Bangladesh	n/a	Higher Secondary Certificate (10+2) with 65% in 4 academic subjects with no subject below 50%	Higher Secondary Certificate (10 + 2) with 65% average in 4 academic subjects including Math minimum 70% + 1 science subject	Higher Secondary Certificate (10 + 2) with 65% average in 4 academic subjects including Math minimum 70% + 2 science subjects
Brazil	Certificado de Ensino Médio 5/10	Certificado de Ensino Médio 6/10	Certificado de Ensino Médio 6/10 including Math minimum 7 + 1 science subject	Certificado de Ensino Médio 7/10 including Math (Math minimum 7) + 2 science subjects
Cambodia	Upper Secondary Diploma with minimum C average in 4 academic subjects	Upper Secondary Diploma with minimum C+ average in 4 academic subjects	Upper Secondary Diploma with minimum C+ average in 4 academic subjects including B in Math + 1 science subject	Upper Secondary Diploma with minimum B average in 4 academic subjects including Math B + 2 science subjects
Canada	n/a	Successful completion of Grade 12 with 75% average in 4 academic subjects	Successful completion of Grade 12 with 75% average in 4 academic subjects including Math minimum 75% + 1 science subject	Successful completion of Grade 12 with 75% average in 4 academic subjects including Math minimum 75% + 2 science subjects
China	Senior Middle 3 with 70% average in 4 academic subjects or Senior Middle 2 with 75% in 4 academic subjects	Successful completion of Senior Middle 3 with 75% average in 4 academic subjects	Successful completion of Senior Middle 3 with 75% average in 4 academic subjects including Math minimum 80% + 1 science subject	Successful completion of Senior Middle 3 with 80% average in 4 academic subjects including Math minimum 80% + 2 science subjects
Colombia	Bachillerato with 65% average in 4 academic subjects	Bachillerato with 75% average in 4 academic subjects	Bachillerato with 75% average in 4 academic subjects including Math minimum 80% + 1 science subject	Bachillerato with 80% average in 4 academic subjects including Math minimum 80% + 2 science subjects
Egypt	Secondary School Completion	Certificate of General Secondary Education (Upper Secondary) with 75% average in 4 academic subjects	Certificate of General Secondary Education (Upper Secondary) with 75% average in 4 academic subjects including Math minimum 80% + 1 science subject	Certificate of General Secondary Education (Upper Secondary) with 80% average in 4 academic subjects including 2 science subjects and Math min. 80%
Hong Kong	HKDSE – Form 5 with Passing Grade + 10% in 4 academic subjects	HKDSE – minimum Level 3 average in 4 academic subjects (Level 2 minimum)	HKDSE – minimum Level 4 Math and average Level 3 in 3 non-Math subjects including 1 science (Level 2 minimum)	HKDSE – minimum Level 4 Math and average Level 3 in 3 non-Math subjects including 2 sciences (Level 2 minimum)
India	n/a	Senior Secondary School Certificate with minimum overall average of 65% in 4 academic senior level subjects with no score below 50% + Math 10 score minimum 50%	Senior Secondary School Certificate with no score below 50% + 1 science subject or 70% average in 4 academic subjects including 1 science subject + Math minimum 50% and no score below 50%	Senior Secondary School (10 + 2) with 65% average in 4 academic subjects including Math minimum 70% + 2 science subjects
Indonesia	SMA 3 with 6.0 average in 4 academic subjects; Year 11 with minimum 7.0 average in 4 academic subjects	SMA 3 with 7.0 average in 4 academic subjects	SMA 3 with 7.0 average in 4 academic subjects including Math minimum 8.0 + 1 science subject	SMA 3 with 8.0 average in 4 academic subjects including Math minimum 8.0 + 2 science subjects
International Baccalaureate	International Baccalaureate 18	International Baccalaureate 22	International Baccalaureate 22 (must include Math minimum 5 + 1 science subject)	International Baccalaureate 24 (must include Math minimum 5 + 2 science subjects)
Iran	High School Diploma	Pre-University Certificate (Peeshdaneshgahe) with 65% minimum average with minimum average in 4 academic subjects	Pre-University Certificate (Peeshdaneshgahe) with 65% average including Math minimum 75% + 1 science subject	Pre-University Certificate (Peeshdaneshgahe) with 75% average including Math minimum 75% + 2 science subjects
Japan	Kotogakko Year 2 with 3 average in 4 academic subjects	Kotogakko Year 3 with 3 average in at least 3 subjects and 1 additional academic subject in Year 2 or 3	Kotogakko Year 3 with 3 average including Math minimum 4 + 1 science subject	Kotogakko Year 3 with 3 average including Math minimum 4 + 2 science subjects
Kenya	KCSE – C- average	KCSE – C+ average	KCSE – C+ average including Math minimum B + 1 science subject	KCSE – B average Math minimum B + 2 science subjects

Country	UTP Stage I	UTP Stage II Business Administration; Arts and Social Sciences; Communication, Art and Technology; Environment (Arts); Health Sciences (BA); Associate of Arts Degree	UTP Stage II Computing Science	UTP Stage II Engineering Science; Environment (Science) Health Sciences (BSc)
Korea	Senior High School Diploma with Rank 6.5 average in 4 academic subjects	Senior High School Diploma with Rank 5.5 average in 4 academic subjects	Senior High School Diploma with Rank 5.0 average in 4 academic subjects including Math minimum Rank 3 + 1 science subject	Senior High School Diploma with Rank 3 average in 4 academic subjects including 2 science subjects and Math minimum Rank 3
Macau	GCE O Levels minimum 4 X C Grades	Certificate of Higher Education (Form 6) with minimum 70% average in 4 academic subjects	Certificate of Higher Education (Form 6) with minimum 70% average in 4 academic subjects including Math minimum 75% + 1 science subject	Certificate of Higher Education (Form 6) with minimum 80% average in 4 academic subjects including Math minimum 75% + 2 science subjects
Malaysia	Successful completion of Form 5 (SPM) with minimum 4 C grades in academic subjects	STPM – 2 passes with minimum C Grade	STPM - Math minimum B + C Grade in 1 science subject	STPM – Math minimum B + 2 science subjects minimum C Grade
Mexico	Bachillerato with 6.0 in 4 academic subjects or completion of Year 11 with 7.0 in 4 academic subjects	Bachillerato with 7.0 in 4 academic subjects	Bachillerato with 7.0 in 4 academic subjects including Math minimum 8.0 + 1 science subject	Bachillerato with 8.0 in 4 academic subjects including Math minimum 8.0 + 2 science subjects
Mongolia	Year 11 with minimum C Grade in 4 academic subjects	Certificate of Complete Secondary Education with minimum C average in 4 academic subjects	Certificate of Complete Secondary Education with minimum C average in 4 academic subjects including Math minimum B + 1 science subject	Certificate of Complete Secondary Education with minimum C average in 4 academic subjects including 2 sciences minimum C Grade + Math minimum B
Nigeria	Completion of WASSCE (WAEC/NECO) with an average of 5 grades at C6 or above	Completion of WASSCE (WAEC/NECO): 5 passes with average grades of C4 and above	Completion of WASSCE (WAEC/NECO) with C4 average in 5 subjects including Math minimum B + 1 science subject	Completion of WASSCE (WAEC/NECO) with B average in 5 subjects including Math minimum B + 2 science subjects
Pakistan	Higher Secondary School Certificate (HSC – 10 + 2) with average 55% in 4 academic subjects	Higher Secondary School Certificate (HSC – 10 + 2) with average 60% in 4 academic subjects	Higher Secondary School Certificate (HSC – 10 + 2) with average 60% in 4 academic subjects including Math minimum 70% + 1 science subject	Higher Secondary School Certificate (HSC – 10 + 2) with average 65% in 4 academic subjects including Math minimum 70% + 2 science subjects
Russian Federation/ Kazakhstan	Attestat with 3.5 average in 4 academic subjects	Attestat with 4.0 average in 4 academic subjects	Attestat with 4.5 average in 4 academic subjects including Math minimum 4.0 + 1 science subject	Attestat with 4.5 average in 4 academic subjects including 2 science subjects and Math minimum 4.0
Taiwan	Senior High School Year 2 with B average	Senior High School Year 3 with B average or 75% in 4 academic subjects	Senior High School Year 3 with 75% average in 4 academic subjects including Math minimum 75% + 1 science subject	Senior High School Year 3 with 75% average in 4 academic subjects including Math minimum 75% + 2 science subjects
Tanzania	Certificate of Secondary Education (CSE) with Grade C or higher or GCE O Levels with C passes in 4 academic subjects	2 X C Grades in A-Levels	2 A Levels including Math minimum B + 1 science subject minimum C Grade	3 A Levels including Math minimum B + 2 science subjects minimum C Grades
Thailand	Matayom 6 with 1.0 average	Matayom 6 with 2.0 average	Matayom 6 with 2.0 average including Math minimum 3.0 + 1 science subject	Matayom 6 with 3.0 average including Math minimum 3.0 + 2 science subjects
Turkey	Lise Diplomasi with no Math below 50%	Lise Diplomasi with minimum 70% or C average in 4 academic subjects with Math minimum 50%	Lise Diplomasi with minimum 75% or C average in 4 academic subjects with Math minimum 80% + 1 science subject	Lise Diplomasi with minimum 75% or C average in 4 academic subjects with Math minimum 80% + 2 science subjects
UAE	Tawjihiyya with 65% average in 4 academic subjects	Tawjihiyya with 75% average in 4 academic subjects	Tawjihiyya with 75% average in 4 academic subjects including Math minimum 85% + 1 science subject	Tawjihiyya with 85% average in 4 academic subjects including Math minimum 85% + 2 science subjects
Ukraine	Certificate of Complete General Secondary Education with minimum 7 average	Certificate of Complete General Secondary Education with minimum 9 average	Certificate of Complete General Secondary Education with minimum 9 average including Math 10 + 1 science subject	Certificate of Complete General Secondary Education with minimum 10 average including Math 10 + 2 science subjects
United States of America	High School Diploma	Successful completion of Grade 12 with minimum 75% in 4 academic subjects	Successful completion of Grade 12 with 75% average in 4 academic subjects including Math minimum 75% + 1 science subject	Successful completion of Grade 12 with 75% average in 4 academic subjects including Math minimum 75% + 2 science subjects
Vietnam	Year 12 with 6.0 average in 4 academic subjects	Year 12 with 7.0 average in 4 academic subjects	Year 12 with 7.0 average in 4 academic subjects including Math minimum 7.5 + 1 science subject	Year 12 with 7.5 average in 4 academic subjects including Math minimum 7.5 + 2 science subjects
Zambia	GCE O Levels with C Grades in 4 academic subjects	Zambian School Certificate with 5 or higher in 4 academic subjects	Zambian School Certificate with 5 or higher in 4 academic subjects including Math minimum 3 + 1 science subject	Zambian School Certificate with 5 or higher in 4 academic subjects including Math minimum 3 + 2 science subjects
Zimbabwe	GCE O Levels with C Grades in 4 academic subjects	2 X A Levels with minimum C Grades	2 A Levels including Math minimum B + 1 science subject minimum C Grade	3 A Levels including Math minimum B + 2 science subjects minimum C Grades

For countries not listed, please contact admissions@fraseric.ca. This information is a guide only and is subject to change without notice.

ENGLISH AND ACADEMIC REQUIREMENTS

Entry into UTP Stage II generally requires the successful completion of secondary school Year 12 or equivalent. Specific academic requirements are listed on fraseric.ca/apply-today/admissions-requirements.

Not all qualifications are listed, so if you have other qualifications, please send details to admissions@fraseric.ca for assessment. If you have completed secondary school but your results do not qualify you for entry into UTP Stage II, you may be eligible to be admitted to UTP Stage I.

ENGLISH REQUIREMENTS

English language qualification	Direct entry	Integrated entry	Cornerstone entry
IELTS (Academic)	6.0 Overall with minimum 6.0 in Reading and Writing and 5.5 in Speaking and Listening	5.5 Overall with minimum 5.5 in Reading and Writing and 5.0 in Speaking and Listening	5.5 Overall no band less than 4.5
TOEFL	79 Overall Reading and Writing minimum 18	69 Overall Reading and Writing minimum 15	59 Overall Reading and Writing minimum 12
British Columbia High School English 12 blended grade + 3 year residency in Canada	55%	50%	n/a
GCSE/O Level English Language	C	D	n/a
HKDSE	4	3	n/a

Students wanting to submit TOEFL scores should request that originals be sent to FIC directly quoting Institution Code 1452.

IELTS test dates can be found through the following links: students in Vancouver area - sfu.ca/ielts/dates and ieltsvancouver.com, all other locations - ielts.org. Students with IELTS 7.0 with minimum 6.5 in Reading and Writing and Speaking and Listening minimum 6.0 or equivalent are exempt from the Academic Literacy Course (ALC).

MATHEMATICS REQUIREMENTS

The Engineering Science, Computing Science, Environmental Science and Health Sciences streams all require the completion of secondary school mathematics (or equivalent) for entry into the program. Prior to beginning their studies, students in any of these programs, as well as Business Administration, will be required to write the Math Assessment Test. The results of this test will determine whether a student needs to complete Pre-Calculus in their first term of UTP Stage II as a prerequisite to their required math course. The Pre-Calculus course is considered an elective for Business Administration, Computing Science and Environmental Science programs. The Math Assessment Test is available online for students who require it, but can also be used by other students who need assistance in determining their math skill level.

Upon arrival at FIC, students in Engineering Science will be required to write the Math Assessment Test and attain a score of at least 26. Students scoring below 26 have the option of attending ENF, the Engineering Skills Foundations program, prior to beginning Engineering studies. This program provides preparatory training in Math, Physics and Computing Science and is geared specifically towards students with an interest in completing the UTP Stage II Engineering pathway. Students whose Math Assessment Test score is below 26 will be provided with advising to ensure they understand their course options, the progression of their program and its completion requirements.

ACADEMIC CALENDAR

Year	Intake	Term start	Term end (including exams)
2019	January	4 January	21 April
2019	May	3 May	17 August
2019	September	29 and 30 August	15 December
2020	January	6 January	20 April

Dates are subject to change without notice.

FEES AND CHARGES: 2019/20 ACADEMIC YEAR

	Normal duration	Total program fees
University level programs		
UTP Stage II	3 terms	C\$27,571 for 30 credits*
Associate of Arts degree	2 years	C\$27,571 for 30 credits per year
Pre-university level program		
UTP Stage I	2 terms	C\$20,776
Additional English language programming		
Integrated	1 term	C\$5,478 (plus additional cost of UTP)
Cornerstone	1 term	C\$7,773 (plus additional cost of UTP)
ELC Pre-Sessional English Program	16 weeks	C\$6,900 (plus a \$250 application fee)
Compulsory charges		
Academic Literacy Course	1 term	C\$2,757 (plus additional cost of UTP Stage II) †
Lab fee for Biology or Physics courses		C\$105
Medical insurance	16 months	C\$966
Student Service Fee	Per term	C\$205
SFU Student Society Fee	Per term	C\$99

* Program fees are based on 30 credits of study at C\$919 per credit. Students taking more than 30 credits of study will need to pay additional fees. Not for credit transfer
Academic Literacy Course is a requirement for UTP Stage II Direct entry.

† Students with IELTS 6.5 with no band below 6.0 or equivalent are exempt from the Academic Literacy Course.

Fees and charges are listed in Canadian dollars (C\$). Actual tuition costs may vary depending on your choice of courses. Fees and charges are subject to change without notice.

PROGRAM FEES INCLUDE:

- full tuition and orientation program
- access to SFU facilities, including student services, libraries, computer labs, recreation facilities
- access to FIC/SFU support services, including student advisory, career, health and counselling services

ADDITIONAL COSTS

As well as your tuition fees, you will need between C\$15,000 and C\$18,000 to meet your expenses each year. These include accommodation, meals, transport, utilities, equipment, textbooks, recreation and entertainment. Certain subjects will be charged a mandatory book fee which is not included in the basic tuition fee.

ENTRY OPTIONS

CORNERSTONE ENTRY

If you meet the cornerstone entry English language requirement and the relevant academic requirements for your country, you will begin UTP Stage I or UTP Stage II and will take cornerstone courses in your first term of study. Students who obtain an A in the cornerstone program will progress to direct entry; those with a B will progress to integrated entry. This program is designed to be completed in four terms.

INTEGRATED ENTRY

If you meet the integrated entry English language requirement and the relevant academic requirements for your country, you will begin UTP Stage I or UTP Stage II and will take INTG100 and two academic courses in your first term of study. An A grade in INTG100 will exempt students from the academic literacy course. This program is designed to be completed in three terms.

DIRECT ENTRY

If you meet the direct entry English language requirement and meet the relevant academic requirements for your country, you will be eligible for direct entry to UTP Stage I or UTP Stage II. Direct entry includes a non-credit academic literacy course. This program is designed to be completed in three terms.

SAMPLE FIC JOURNEY*

CORNERSTONE ENTRY

If you meet the cornerstone entry language requirements (IELTS 5.5 with no band less than 4.5), you will begin UTP Stage I or UTP Stage II and take Cornerstone courses in your first term of study.

1st term (Cornerstone)	2nd term	3rd term	4th term
CNQS101 + CNST101 (18hrs/week)	3 academic courses	4 academic courses	3 academic courses

Total tuition investment: \$27,571 (10 academic courses; 30 credits) + \$7,773 (Cornerstone) = \$35,344

Note: Students who obtain an A in the Cornerstone program will progress to direct entry; those with a B will progress to integrated entry.

INTEGRATED ENTRY

If you meet the integrated entry language requirement (IELTS 5.5 overall with 5.5 R & W, 5.0 S & L), you will begin UTP Stage I or UTP Stage II and will take INTG100 and two academic courses in your first term of study.

1st term	2nd term	3rd term
2 academic courses + INTG100 (8 hours/week)	4 academic courses	4 academic courses

Total tuition investment: \$27,571 (10 academic courses; 30 credits) + \$5,478 (INTG100) = \$33,049

Note: An A grade in INTG 100 will exempt students from the academic literacy course (ALC).

DIRECT ENTRY

If you meet the direct entry language requirements (IELTS 6.0 with 6.0 R & W, 5.5 S & L), you will be eligible for direct entry to UTP I or UTP II.

1st term	2nd term	3rd term
3 academic courses + Academic Literacy Course (4hrs/week)	4 academic courses	3 academic courses

Total tuition investment: \$27,571 (10 academic courses; 30 credits) + \$2,757 (Academic Literacy Course) = \$30,328

ALC EXEMPT ENTRY

If you meet the ALC Exempt entry language requirement (IELTS 7.0 with minimum 6.5 in R & W, 6.0 S & L), you will begin UTP Stage I or UTP Stage II.

1st term	2nd term	3rd term
3 academic courses	4 academic courses	3 academic courses

Total tuition investment: \$27,571 (10 academic courses; 30 credits)

ACADEMIC LITERACY COURSES

FIC's Academic Literacy Courses are compulsory, multi-disciplinary and designed to help students achieve success in university-level writing. An academic literacy course is compulsory for all UTP Stage II students. †

* Based on English requirements. † Students with IELTS 7.0 with minimum 6.5 in Reading and Writing and 6.0 in Listening and Speaking or equivalent are exempt from the non-credit academic literacy course.

SCHOLARSHIPS AND BURSARIES

ACADEMIC MERIT SCHOLARSHIPS

FIC is committed to helping you achieve your career goals by offering scholarships to outstanding students. Each term, FIC awards two students with academic merit scholarships.

For more information, please email

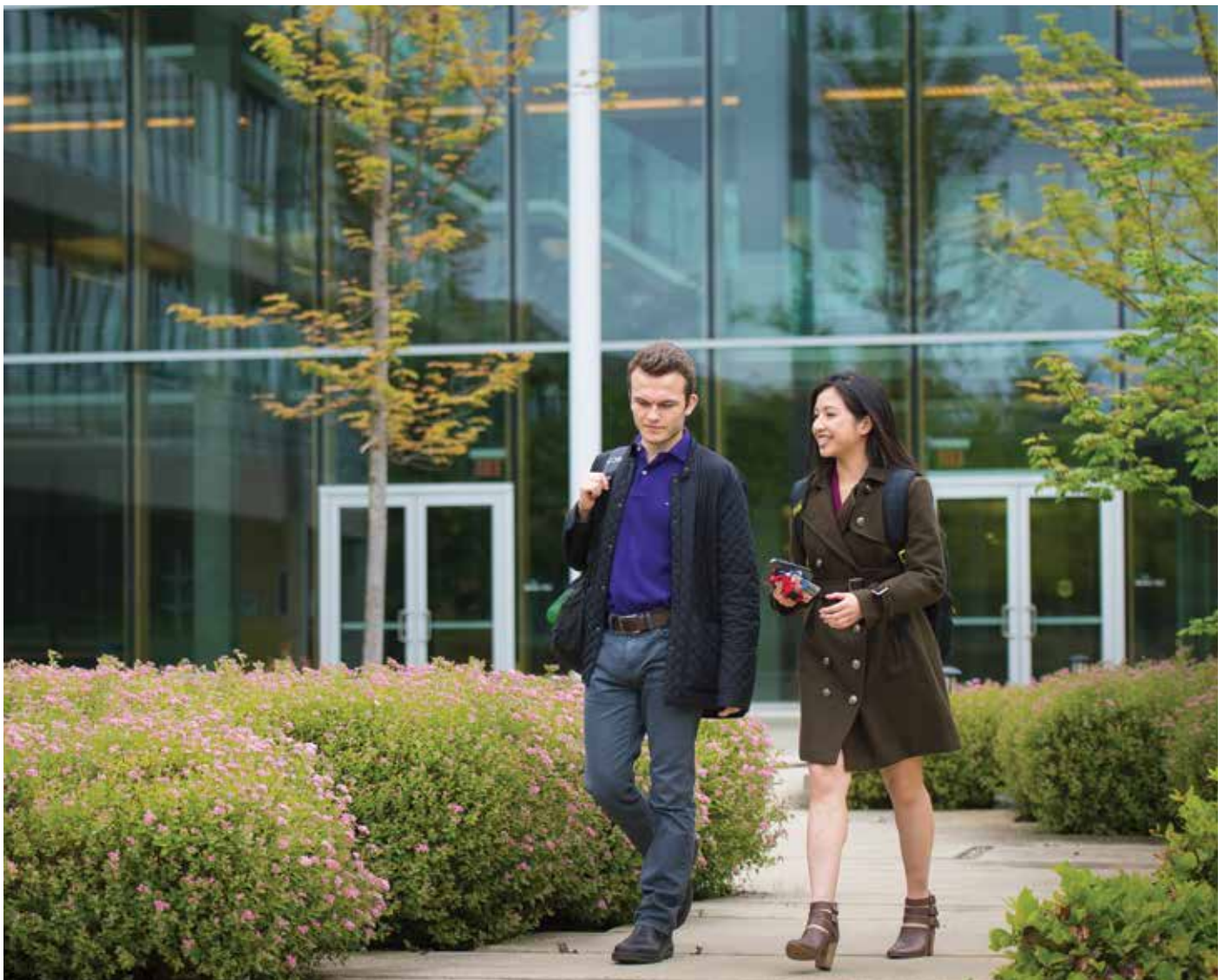
admissions@fraseric.ca or visit fraseric.ca/scholarships.

FAMILY BURSARIES

- FIC offers financial support in the form of family bursaries.
- A bursary applies where two or more students from the same family study at Fraser International College.*
- The bursary is equivalent to 10 percent of the tuition fee of your program of study.
- The family bursary is not applicable to any English language program or any component of an English language program.

* Or at another participating Navitas institution.

This information is correct as at the time of printing and may be subject to change without notice.



CONDITIONS OF ENROLMENT

Your contract with Fraser International College (FIC)

- Upon accepting the enrolment offer from FIC, the student has initiated a contract with FIC and is bound by the following declaration: "I hereby accept and promise to observe the statutes, rules and regulations and ordinances (including, if any, by-laws, codes and policies) of FIC, and of the program in which I am registered, and to any amendments thereto which may be made while I am a student of FIC."
- The student is expected to regularly attend all their classes (including lectures, tutorials, seminars, etc.) and to carry out all assigned evaluations (assignments, projects, examinations, etc.). FIC is not responsible for the consequences that flow from the student neglecting their academic work and assignments. Students who are unavoidably absent because of illness or disability should report to their instructors and FIC as soon as possible. Any request for an academic concession must be clearly expressed.
- FIC may, by written notice, vary the conditions of enrolment as may be necessary to comply with any law, regulation or amendment thereof, of Canada or the Province of British Columbia. Any such variance will bind FIC and the student upon reasonable notice being given by FIC to the FIC student population at large — specific notice to the student is not required.
- FIC reserves the right to withdraw a program(s) or course(s) from offer, at its discretion, at any time and without prior notice. Upon being notified of the withdrawal of a program in which a student is enrolled, the student will be given the option of completing the program on a full-time enrolment basis, being transferred to another program within FIC for which the student is eligible or obtaining a refund in accordance with the Fee Refund Policy set out below (note: a cancellation fee may be applied). Upon being notified of the withdrawal of a course in which the student is enrolled, the student will be given the option of transferring into another course in the student's program or obtaining a refund of tuition, fees and charges paid in respect of that course in accordance with the Fee Refund Policy set out below (note: a cancellation fee may be applied).
- The contract between the student and FIC is governed by the laws of Canada and the Province of British Columbia.

Tuition, fees and charges

- Applicable tuition, fees and charges are as set out in the Tuition Fees section of the FIC website (fraseric.ca). FIC reserves the right to vary its tuition, fees and charges at any time and such changes are effective immediately, unless otherwise expressly indicated. For greater certainty, if the tuition, fees and charges for a student's program increase partway through the student's program, the revised tuition, fees and charges apply throughout the remainder of the student's program.
- All tuition, fees and charges for each academic term are due and payable on the term start date, which is listed on the FIC website (fraseric.ca), unless otherwise indicated. Students will not be permitted to start or continue their program at the beginning of any term until all outstanding tuition, fees, charges and accounts, including any outstanding amounts from prior terms, are paid.
- Tuition, fees and charges for each program include the courses described in this brochure.
- Where a student enrolls in more courses than are required to complete their program, the student will pay the tuition, fees and charges for their program, plus the current per-course fee for each additional course undertaken.
- Where a student enrolls in fewer courses than are considered a full course load (defined as four courses per term), the tuition, fees and charges for the program payable in that term will be reduced accordingly, it being understood that the total tuition, fees and charges for the program are not reduced, but will be paid over the time it takes for the student to complete the program.
- Students are responsible for ensuring their study permit is valid if they choose to study part-time
- If a student wishes or is required to repeat a course, the student shall

pay the tuition, fees and charges applicable for that course, prior to commencing the course, in addition to any other tuition, fees and charges applicable to the student's program.

- Any overpayment of tuition, fees or charges will remain credited towards a student's account and applied against tuition, fees and charges in the following academic term(s).
- Subject to rules set out in the Fee Refund Policy below, refunds are only given once the policy is applied and if there is a credit in the tuition account.

Study permits

- International students are required by Citizenship and Immigration Canada to obtain a study permit in order to study in Canada. It is each student's responsibility to obtain and maintain all required authorizations to study in Canada. For specific information on study permits, go to Citizenship and Immigration Canada (cic.gc.ca/english/study/index.asp).
- Study permits are governed by Citizenship and Immigration Canada's rules. Students must apply to Citizenship and Immigration Canada for a new study permit before their current study permit expires. FIC staff cannot assist students wishing to extend their study permits. Assistance with study permit renewals can only be provided by registered Immigration consultants. It is the student's responsibility to renew their study permit and temporary residence permit through Citizenship and Immigration Canada.
- Everyone living in British Columbia for six months or longer, including international students, is required by law to obtain medical insurance coverage. FIC will administer the student's enrolment in a private health insurance fund by registering the student for coverage for 16 months, collecting the applicable fees from the student (see the Tuition Fees section of the FIC website) and remitting the fees to the insurer. At the end of the 16 months, students have the option to apply for Medical Services Plan (MSP) coverage from the British Columbia government, or to extend their private medical insurance. For more information, visit www2.gov.bc.ca/gov/content/health/health-drug-coverage/msp.

Academic and English language requirements

- Students must meet the minimum academic and English language requirements for entry to their chosen program (see the entrance requirements at fraseric.ca for the current requirements). Students must provide original or certified transcripts and the results of their English language assessments to FIC, together with their application for enrolment. If the results reveal insufficient academic and/or English language skills, as determined in reference to the entrance requirements section of the FIC website, FIC will, as its sole option, do one of the following:
 - Admit the student into their chosen program, but require that the student enrol and achieve a certain grade in one or more academic or English language course in the first academic term of their program. The student shall pay tuition, fees and charges for each additional course(s). If the student fails to achieve the required grade in the additional course(s), FIC may, in its sole discretion, refuse the student access to the remaining courses in the program until such time as the student can demonstrate that they meet the minimum requirements for their chosen program.
 - Deny the student admission to their chosen program or give the student the option to enrol in an intensive English language program or other programs at FIC. The student may wish to apply to another institution in order to pursue additional studies. In either case, upon completing these program(s) and demonstrating to FIC that the student now meets the minimum requirements for entry to their chosen program, the student may again apply for admission to their chosen program.

Deferral prior to commencing studies

- Deferral requests must be made in writing.
- Once a student is accepted into their chosen program, the student may defer their program start date by a maximum of two terms.
- If a student defers their program start date, FIC will hold the tuition, fees and charges paid until the student commences their program, without interest or penalty.
- If the student withdraws without commencing their program or has their enrolment terminated in the manner described in paragraph 3 of this section, the Fee Refund Policy will apply.
- If a student has been issued with a valid study permit they may not defer their admission.

Deferral after first semester of studies

- Students in the first academic term of their program may not defer their program after the start of the term.
- Once a continuing student has completed at least one term at FIC, they may defer their program if they make a deferral request within the first four weeks of the term. In this case, FIC will hold the tuition, fees and charges paid by the student, without interest or penalty, and apply all such amounts to the next term.
- If the student subsequently withdraws from FIC, the Fee Refund Policy will apply retroactive to the original semester of entry.
- If the student applies to defer their program after the fourth week of the term, the deferral request will be granted but all tuition, fees and charges for that term will be forfeited to FIC, except if the deferral request arises due to illness or compassionate reasons.
- For details of the academic consequences of withdrawing from a program after commencing studies, follow the link to FIC's Withdrawal Policy on fraseric.ca.

Cancellation and withdrawal

- The student may, at any time, cancel their enrolment at FIC. In all cases, the Fee Refund Policy will apply.
- The student may, at any time, withdraw from a program. In all cases, the Fee Refund Policy will apply.
- In all cases, if the student intends to cancel their enrolment or withdraw from a program, the student must notify FIC in writing.
- For details of the academic consequences of withdrawing from a program after beginning studies, follow the link to FIC's Withdrawal Policy on fraseric.ca.

Fee refund policy

- For the purposes of this Fee Refund Policy, tuition, fees and charges are defined in terms of one full-time term of study (equivalent to four subjects) in any program at FIC.
- Students may dispute FIC's decision regarding a refund by submitting a written request for reconsideration, together with details supporting their request, to the FIC Director of Finance. This process does not restrict the student's right to pursue other legal remedies.
- In cases of the cancellation of enrolment or withdrawal from a program or course, the cancellation fee, administration charge, if relevant, and the refund of tuition, fees and charges, is calculated as shown in the table below.
- In cases of deferrals, the tuition, fees and charges paid by the student will be retained by FIC, without interest or penalty, until the student recommences their studies or withdraws from FIC.
- If the student withdraws from FIC after having deferred the start of their program, the Fee Refund Policy will apply as at the date FIC was advised of the student's deferral, based on the original start date of the program.
- Where a study permit:
 - is refused to the student after enrolment; or
 - is not, for any reason, extended by Immigration, Refugees and Citizenship Canada;
 - FIC will retain the cancellation fee set out in the table below for "study permit refusal" and refund the balance of the tuition, fees and charges paid by the student.
- A student whose enrolment is terminated by FIC due to a breach of the terms and conditions of the contract between the student and FIC, including, without limitation, the rules, regulations and policies of FIC, will not be entitled to any refund of any tuition, fees and (commencement of classes will be the day of orientation) charges.
- As set out elsewhere in these conditions of enrolment, FIC reserves the right to withdraw a program or course(s) from offer. If, as a result, a student is unable to enrol in a similar program or course(s) at FIC and the student wishes to cancel their enrolment, all tuition, fees and charges will be refunded, with the exception of a C\$500 administration fee.
- At the completion of the FIC program, the balance remaining in the student's account will be transferred entirely to Simon Fraser University for students enrolled in Simon Fraser University. For students not enrolled in Simon Fraser University, the remaining balance less a \$250 administration fee will be transferred.
- All approved refunds under this Fee Refund Policy will be paid within four weeks of receiving a written claim from the student in a form and containing such information as is reasonably required by the Director of Finance.

Notification period	Cancellation fee
Study permit refusal (proof of refusal necessary; for example, letter of rejection from Canadian Embassy)	C\$500
NOTIFICATION RECEIVED PRIOR TO THE START OF CLASSES IN ANY TERM (BEGINNING OF CLASSES WILL BE THE DAY OF ORIENTATION)	
More than 10 weeks	20% of term fees* (+ a C\$500 administration fee)
10 weeks or less	50% of term fees* (+ a C\$500 administration fee)
On or after orientation	No refund
WITHDRAWAL FROM A SINGLE COURSE(S)	
Weeks 1–4	No penalty. Funds remain with FIC and are credited against enrolment in a subsequent term. Fees are forfeited if the student does not re-enrol in the subsequent term.
Weeks 5–14	No refund
Withdrawal from a program in the first term	
Prior to commencement of second semester	100% of program fees

* Term fees = 4 courses. The cancellation fees listed above refer only to FIC tuition, fees and charges. For cancellation fees relating to airport reception or homestay placement, please contact the relevant third party.

HOW TO APPLY

STEP 1

Apply online:
fraseric.ca/apply



To apply, please visit fraseric.ca/apply, complete our free online application form and attach your transcripts, English language proficiency results and a copy of your passport's photo page.

Once we have received your complete application, you will receive a decision within 24-48 hours.

STEP 2

Receive an offer



Once you have received your Letter of Offer, you must:

1. Sign the Acceptance of Offer form and return it to:
admissions@fraseric.ca (FIC)
2. Pay the tuition deposit indicated on the Letter of Offer.

STEP 3

Acceptance
confirmation



Once payment is made, you will be sent a Letter of Acceptance, payment receipt and revised Letter of Offer. All three documents should be submitted for visa application. For details on how to apply for a study visa, go to:

cic.gc.ca/english/study

Remember, accommodation options are limited. You are encouraged to apply as early as possible.

STEP 4

Enrolment and
arrival



Approximately three weeks before the beginning of the term, you should enrol in your classes online. You will be sent detailed instructions on how to do this.

New student orientation is typically held the Thursday or Friday before your classes begin. You will receive notice with more details about orientation by email.

FIC has a mandatory first week attendance policy. If you are not able to arrive in time for the first day of classes, you must defer your offer to the following intake.

FIC does not have application deadlines, but you must be sure to leave yourself enough time to apply for your visa.

FIND OUT MORE ONLINE

ACADEMIC AND ENGLISH ENTRY REQUIREMENTS

[FRASERIC.CA/ADMISSION-REQUIREMENTS](https://fraseric.ca/admission-requirements)

POLICIES AND PROCEDURES

[FRASERIC.CA/POLICIES-AND-PROCEDURES](https://fraseric.ca/policies-and-procedures)

INTERNATIONAL STUDENT VISAS

[CIC.GC.CA/ENGLISH/STUDY/INDEX.ASP](https://cic.gc.ca/english/study/index.asp)

ACCOMMODATION OPTIONS

[FRASERIC.CA/ACCOMMODATION](https://fraseric.ca/accommodation)

CONNECT WITH US



@FICNEWS



@MYFIC



MYFIC



[FACEBOOK.COM/FRASERIC](https://facebook.com/fraseric)



**FRASER INTERNATIONAL COLLEGE
AT SIMON FRASER UNIVERSITY**

8999 Nelson Way
Burnaby, British Columbia
Canada V5A 4B5
T +1 778 782 5011
F +1 778 782 5101
E info@fraseric.ca

fraseric.ca

sfu.ca

CRA BN 81210 5146
DLI Number: 019239078442

The information contained in this student guide is correct at the time of publication, however, Fraser International College (FIC) reserves the right to alter, amend or delete details at any time without notice.

This student guide is provided free of charge.

Printed December 2018

FIC180828_AW

APPLY NOW!
FRASERIC.CA